

**ARCHITECTURAL KEYNOTES**

- A10 WALL-MOUNTED TELEVISION-N.I.C. PROVIDE IN-WALL BLOCKING AS REQUIRED FOR MOUNTING.
- A12 OPERABLE OVERHEAD PROJECTOR SCREEN MOUNTED FLUSH IN-CEILING, PROVIDE POWER AS REQUIRED.
- A13 ALUM SUNSHADE ABOVE.
- A14 WALL MOUNTED DISPLAY CASE, LOCKABLE.
- A15 ALUMINUM COMPOSITE SUN SCREEN, ATTACHED TO STRUCTURE.
- A17 WALL-MOUNTED MARKER BOARD, PROVIDE IN-WALL BLOCKING AS REQUIRED FOR MOUNTING.
- A20 EXTERIOR GAS CONNECTION FOR GRILL, REFER TO MECHANICAL DRAWINGS.
- A21 CLERESTORY WINDOW ABOVE, REFER TO INTERIOR ELEVATION.
- A33 METAL OUTSIDE CORNER GUARD, WCG-1.
- A35 RECESSED FIRE EXTINGUISHER CABINET, REFER TO DETAIL 30/A82.1.
- A36 SURFACE MOUNTED FIRE EXTINGUISHER CABINET.
- A37 TERRAZZO FLOOR JOINT, ALIGN OVER CONCRETE SLAB JOINT.
- A39 CLOSET SHELVING, REFER TO SHEET A825 FOR CLOSET TYPE DETAILS.

**GENERAL PLAN NOTES**

1. DO NOT SCALE THE DRAWINGS FOR CONSTRUCTION PURPOSES. REPORT OMISSIONS OR DISCREPANCIES TO THE ARCHITECT IMMEDIATELY FOR CLARIFICATION.
2. CONTRACTORS SHALL VERIFY ALL DIMENSIONS AND EXISTING CONDITIONS. ANY DISCREPANCIES BETWEEN THE PLANS AND FIELD CONDITIONS SHALL BE REPORTED TO THE ARCHITECT PRIOR TO PROCEEDING WITH THE WORK.
3. INTERIOR PLAN DIMENSIONS ARE TO CENTERLINE OF METAL STUD PARTITION UNLESS NOTED OTHERWISE.
4. SEE CODE PLAN FOR FIRE RATED WALL LOCATIONS AND RATINGS.
5. SEE REFLECTED CEILING PLAN FOR CEILING HEIGHTS.
6. SEE FINISH PLAN FOR ROOM FINISHES.
7. SEE EXTERIOR ELEVATIONS FOR WINDOW TYPE TAGS.
8. SEE WALL SECTIONS FOR MASONRY COURSING. COORDINATE WITH HOLLOW METAL FRAMES.
9. TYPICAL INTERIOR WALLS SHALL BE WALL TYPE "0 S4" FULL HEIGHT, UNLESS NOTED OTHERWISE.
10. SEE GENERAL CONSTRUCTION NOTES ON SHEET A801 FOR MORE INFORMATION.
11. PROVIDE BLOCKING BEHIND ALL WALL MOUNTED ITEMS. BLOCKING TO BE FIRE-RETARDANT TREATED.
12. ARCHITECTURAL FINISH FLOOR ELEVATIONS ARE TO TOP OF CONCRETE SLAB OR TOPPING.
13. REFER TO NOTES ON SHEET A810 FOR DOOR INSTALLATION NOTES AND LOCATING FRAMES NEAR INTERSECTING WALLS.
14. ARCHITECTURAL FINISHED FLOOR ELEVATION 100'-0" ± 756.50. REFER TO CIVIL DRAWINGS.

**CONSULTANTS**

**PROJECT TITLE**

**SHAKOPEE CITY HALL**

**KEY PLAN**



**ISSUE # DATE DESCRIPTION**

ISSUE #	DATE	DESCRIPTION

**NOT FOR CONSTRUCTION**

**CERTIFICATION**

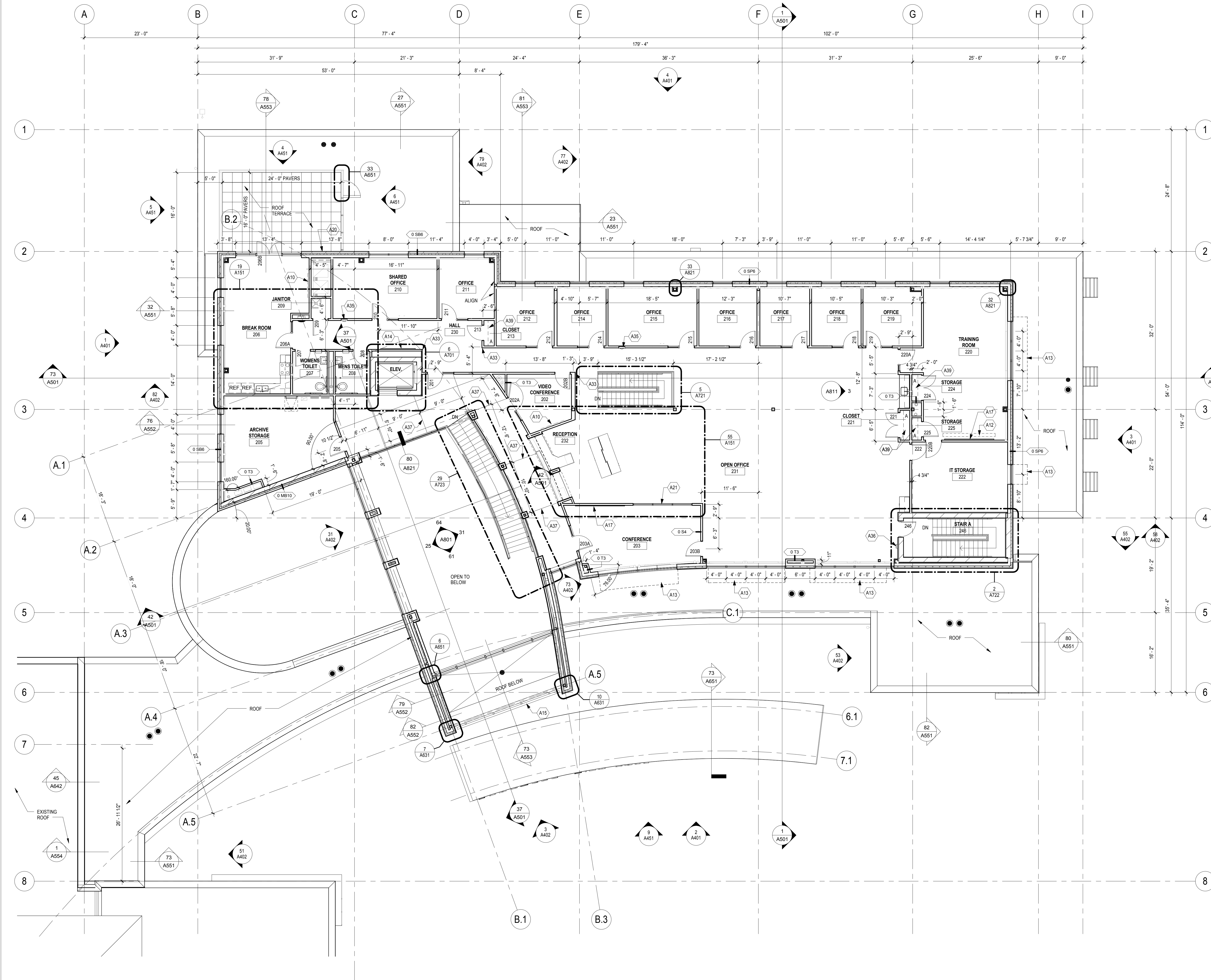
License Number	Date
DATE	03/16/2016
DRAWN BY	MLH
CHECKED BY	Checker
COMMISSION NUMBER	1087.08

**SHEET TITLE**

**LEVEL 2 FLOOR PLAN**

**SHEET NUMBER**

**A102**



**FLOOR PLAN - LEVEL 2**  
1/8" = 1'-0"